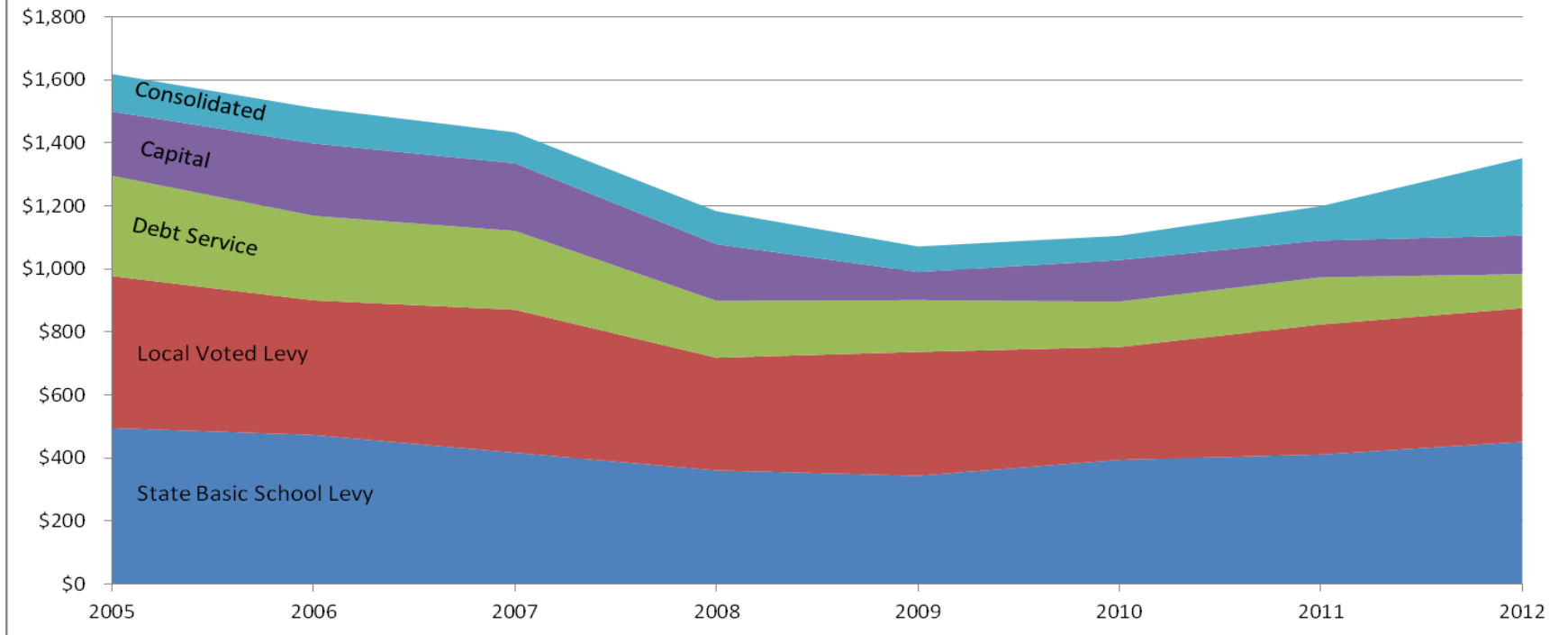


**Park City School District**  
**General Fund**  
**5 Year Budget Forecast**

	<b>Year 1 2012-2013</b>	<b>Year 2 2013-2014</b>	<b>Year 3 2014-2015</b>	<b>Year 4 2015-2016</b>	<b>Year 5 2016-2017</b>
<b>Revenues:</b>					
Local Sources	\$ 43,637,528	\$ 43,637,528	\$ 43,637,528	\$ 43,637,528	\$ 43,637,528
State Sources	1,181,627	1,181,627	1,181,627	1,181,627	1,181,627
Federal Sources	1,184,370	1,184,370	1,184,370	1,184,370	1,184,370
<b>Total Revenues</b>	<b>\$ 46,003,525</b>	<b>\$ 46,003,525</b>	<b>\$ 46,003,525</b>	<b>\$ 46,003,525</b>	<b>\$ 46,003,525</b>
<b>Expenditures:</b>					
Base Budget	\$ 45,036,281	\$ 42,779,747	\$ 44,460,928	\$ 45,216,964	\$ 46,057,070
Base Adjustments					
Benefit Cost Increases (Retirement, Health)	800,415	600,868	669,297	746,429	833,389
Early Retiree Savings (Previous Program)	(131,313)	-	-	-	-
Supplies (Fuel, Natural Gas)	74,364	80,313	86,738	93,677	101,171
Potential Expenditure Increases	-	1,000,000	-	-	-
Adopted Budget Reductions	(3,000,000)	-	-	-	-
<b>Total Expenditures</b>	<b>\$ 42,779,747</b>	<b>\$ 44,460,928</b>	<b>\$ 45,216,964</b>	<b>\$ 46,057,070</b>	<b>\$ 46,991,630</b>
<b>Excess (Deficiency) of Revenues Over Expenditures</b>	<b>\$ 3,223,778</b>	<b>\$ 1,542,597</b>	<b>\$ 786,561</b>	<b>\$ (53,545)</b>	<b>\$ (988,105)</b>
<b>Available Rainy Day Funds - Beginning of Year</b>	<b>7,157,180</b>	<b>10,380,958</b>	<b>11,923,555</b>	<b>12,710,116</b>	<b>12,656,571</b>
<b>Rainy Day Funds - End of Year</b>	<b>\$ 10,380,958</b>	<b>\$ 11,923,555</b>	<b>\$ 12,710,116</b>	<b>\$ 12,656,571</b>	<b>\$ 11,668,466</b>
<b>Recommended Level of Rainy Day Funds (2 Months Operating Expenses)</b>	<b>\$ 7,129,958</b>	<b>\$ 7,410,155</b>	<b>\$ 7,536,161</b>	<b>\$ 7,676,178</b>	<b>\$ 7,831,938</b>
<b>Excess (Deficiency) of Recommended Rainy Day Funds</b>	<b>\$ 3,251,000</b>	<b>\$ 4,513,400</b>	<b>\$ 5,173,955</b>	<b>\$ 4,980,393</b>	<b>\$ 3,836,528</b>

revised 8/17/2012 ver 2.5

## Park City School Property Taxes on a \$500,000 Primary Residence



revised 6/8/2012